

MONTHLY MEMBERSHIP PROGRESS REPORT

District 309

Results as of: 5/31/2026

GMT:

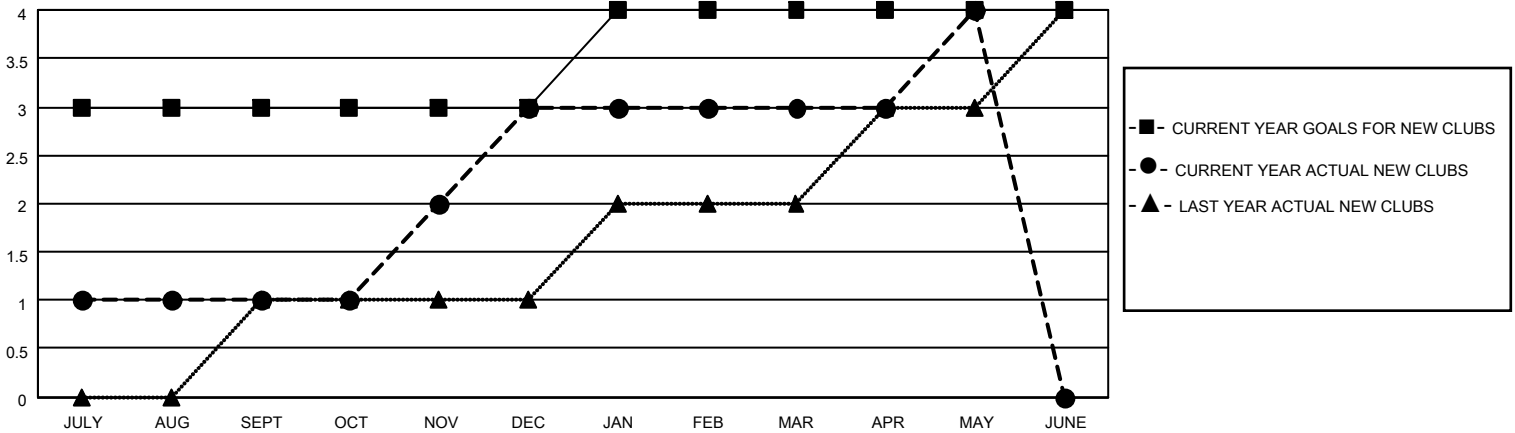
LOCATION SINGAPORE

GMT CA

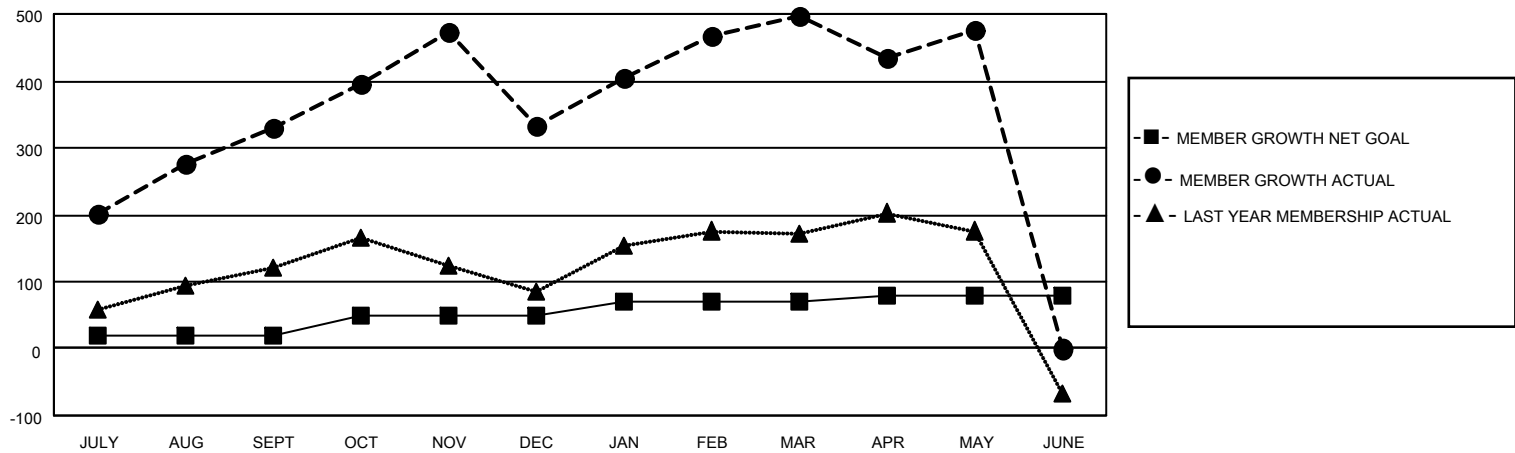
Clubs			
RESULTS FOR 2025-2026			
QUARTER	NEW CLUB GOAL	NEW CLUBS	DROPPED CLUBS
JULY/AUG/SEPT	3	1	0
OCT/NOV/DEC	0	2	5
JAN/FEB/MAR	1	0	0
APR/MAY/JUNE	0	1	0

Members			
RESULTS FOR 2025-2026			
QUARTER	MEMBER GROWTH NET GOAL	MEMBER GROWTH ACTUAL	DROPPED MEMBERS ACTUAL (including transfers)
JULY/AUG/SEPT	20	406	50
OCT/NOV/DEC	30	240	230
JAN/FEB/MAR	20	175	6
APR/MAY/JUNE	10	179	129

GOALS AND ACTUAL NEW CLUBS CUMULATIVE



GOALS AND ACTUAL MEMBERS CUMULATIVE



DROPPED CLUBS: 5	70 CLUBS OF 112 ADDED 1 OR MORE NEW MEMBERS	GENDER DISTRIBUTION	
		MALE 1,715 (45.44%)	FEMALE 2,022 (53.58%)
DROPPED MEMBERS		CLICK HERE FOR CUMULATIVE MEMBERSHIP DATA	
DECEASED 5	TOTAL FAMILY UNIT MEMBERS 113	TOTAL FAMILY UNIT MEMBERS 113	
CLUB CANCELLED 154		FAMILY MEMBERS PAYING HALF DUES 62	
OTHER 257		FAMILY MEMBERS PAYING HALF DUES 62	
TOTAL 416		FAMILY MEMBERS PAYING HALF DUES 62	